



# *Symphonic Dance Music*

## *Technical rider*

Outdoor Event

### **Kontakt:**

Management:

Sound: Martin Valový (martin.valovy@seznam.cz)

Light: Roman Sos (sos.roman@gmail.com)

Rigging: Adam Kužel (adushlight@gmail.com)

Video: VJ Martin (VJMartin@seznam.cz)



## Content

Lights.....	page 3
Rigging and Weight of trusses.....	page 8
Sound.....	page 10
Video.....	page 12
Lasers.....	Page 13



## Lights Requirements – Minimal Setup

### No Chinese Lights !!

Spots: 24Pcs Same type

Wash: 26Pcs Same type

Beam: 12Pcs Same type

Blinder 4-Lite: 6Pcs

Strobo: 12Pcs Same type

Smoke: 4Pcs

Led Beam On Podium :8Pcs Same type

Led Bar RGBW on Podium: 4Pcs Same type

1Pc Light to dirigent in the middle of Mid Truss 2 (Static light (Profille) or small Led Wash (Mac 101, Aura))

1Pc Light to DJ in the middle of Mid Truss 2 (Static light (Profille) or small Led Wash (Mac 101, Mac Aura))

### Spots (Spots with CMY color mixing with minimal 800W Lamp (No 575W))

Optimal Clay Paky QWO 800

Clay Paky: QWO 800, Alpha Spot 1500, Mythos, Axcor Profilfe 900, Scenius,

Robe: BMFL Spot, MMX Spot

Martin: Mac Viper, Mac III, Mac Axiom, Mac Quantum Profile

**Beam:** Optimal Clay Paky Sharpy

Robe: Pointe, Mega Pointe

JB Lighting: JB P4

Clay Paky: Sharpy, Mythos, Super Sharpy

Martin: MH7 Hybrid, Mac Axiom, Rush MH11 Beam

### Led Wash (Wash with beam effect with RGBW or CMY color mixing and Zoom min 500W)

JB Lighting: JB A8, JB A12, Sparx 10/18/30

Clay Paky: Aleda Wash/B-Eye K10 or K20, Sharpy Wash

Robe: Spiider, Led Beam 1000

Martin: Mac Quantum Wash, Mac Aura XB

**Strobo:** SGM: X-5 Strobe

Martin: Atomic 3000, Atomic Led



**Back Truss:** 8x Spots Optimal Clay Paky QWO 800 (Clay Paky, Robe, Martin)

6x Beam: Optimal Clay Paky Sharpy (Robe, Jb Lighting, Clay Paky, Martin)

6 Led Wash (JB Lighting, Clay Paky, Robe, Martin)

4x Strobe (SGM, Martin)

**Mid Truss 1:** 8x Spots Optimal Clay Paky QWO 800 (Clay Paky, Robe, Martin)

6x Led Wash (JB Lighting, Clay Paky, Robe, Martin)

4x Strobe (SGM, Martin)

**Mid Truss 2:** 8x Spots Optimal Clay Paky QWO 800 (Clay Paky, Robe, Martin)

6x Beam: Optimal Clay Paky Sharpy

6x Led Wash (JB Lighting, Clay Paky, Robe, Martin)

4x Strobe (SGM, Martin)

**Front Truss:** 8x Led Wash

6x Blinder: 4-Lite or 8-Lite

**Floor:** 4x Led Bar RGBW At Front on podium

8x Led Wash In Orchestr: Optimal Mac 101, Mac Aura or others

**Smoke:** 2x FOG + 2x Unique + 4x Fan (1xFog +1xFan Back Left side and 1xFog+1xFan Back Right Side)

(1xUnique +1xFan Front Left and 1xUnique+1xFan Front Right)

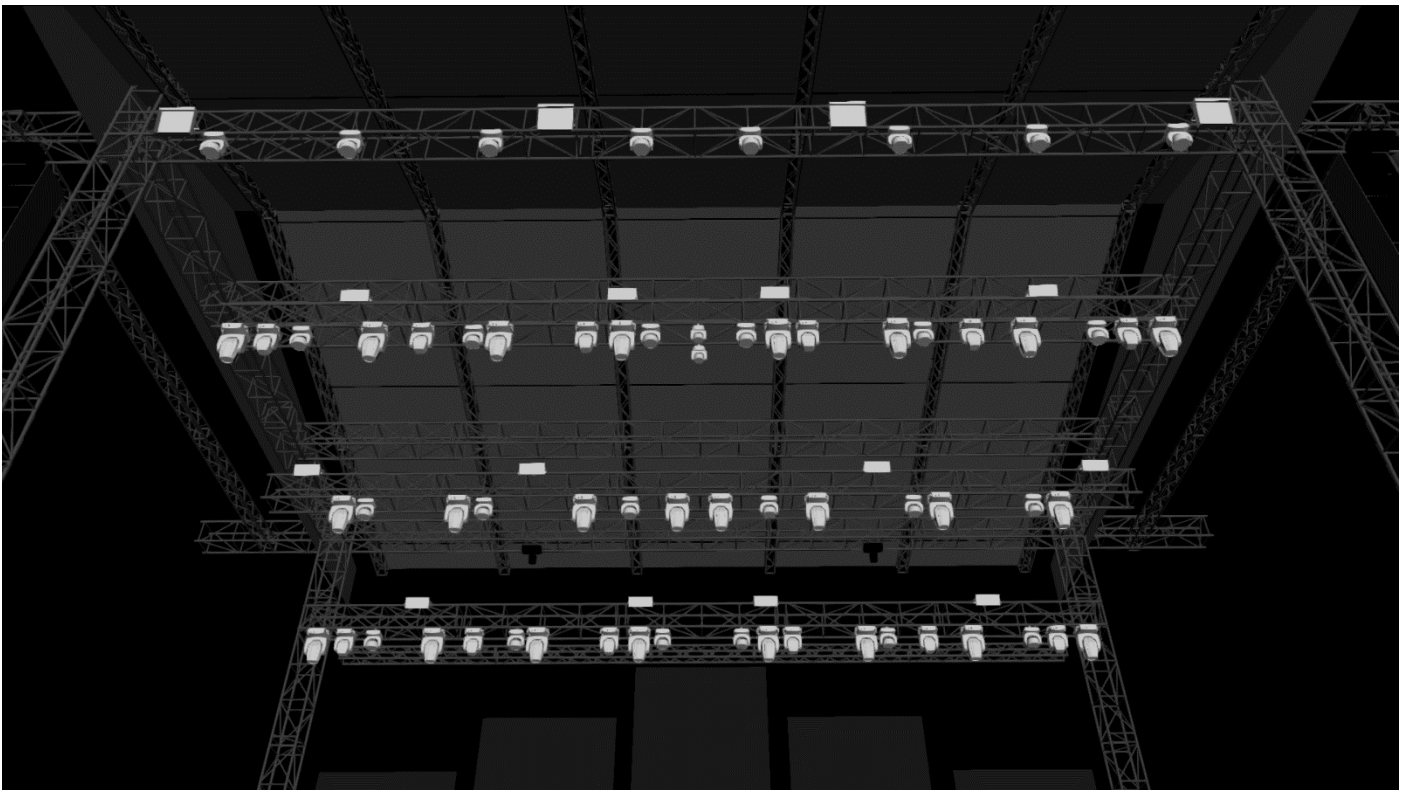
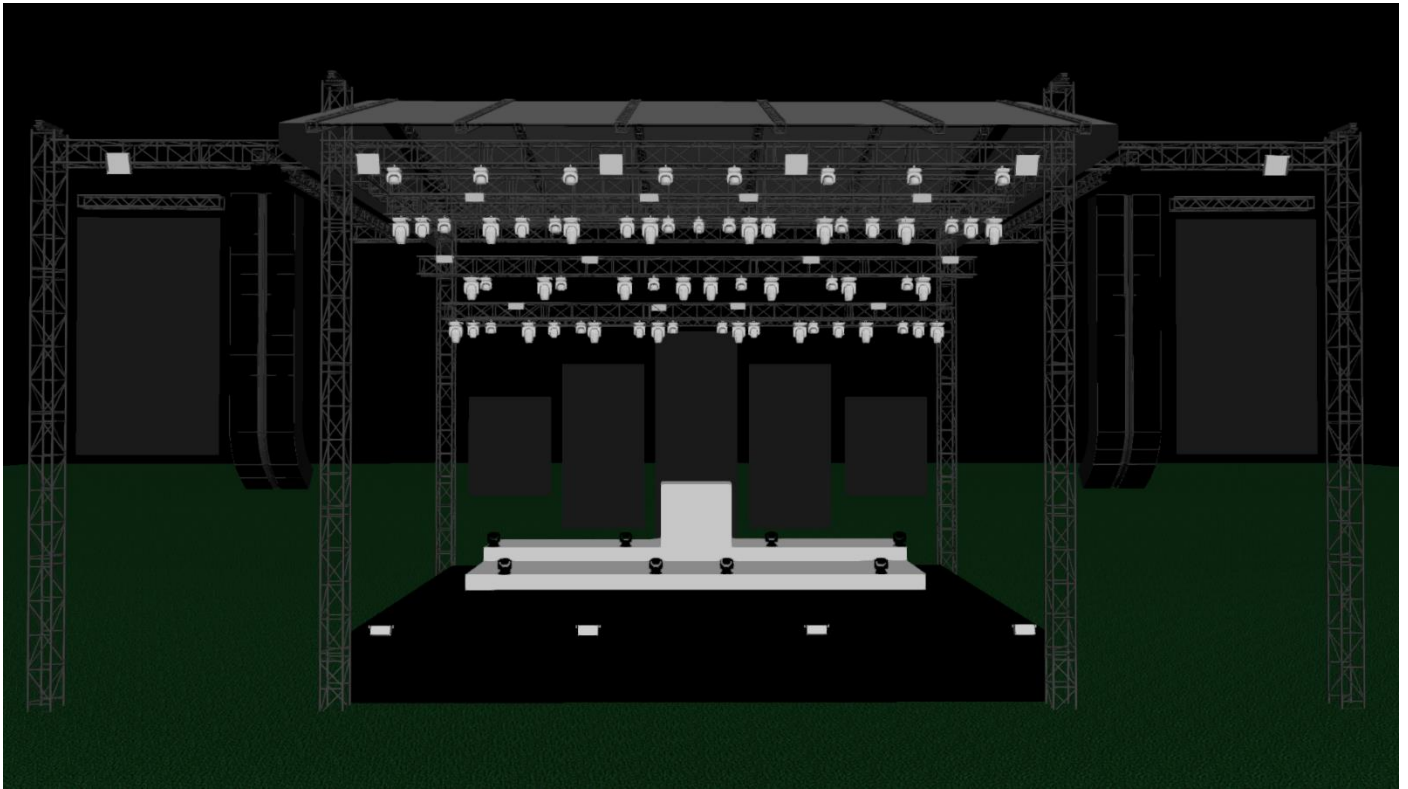
Or

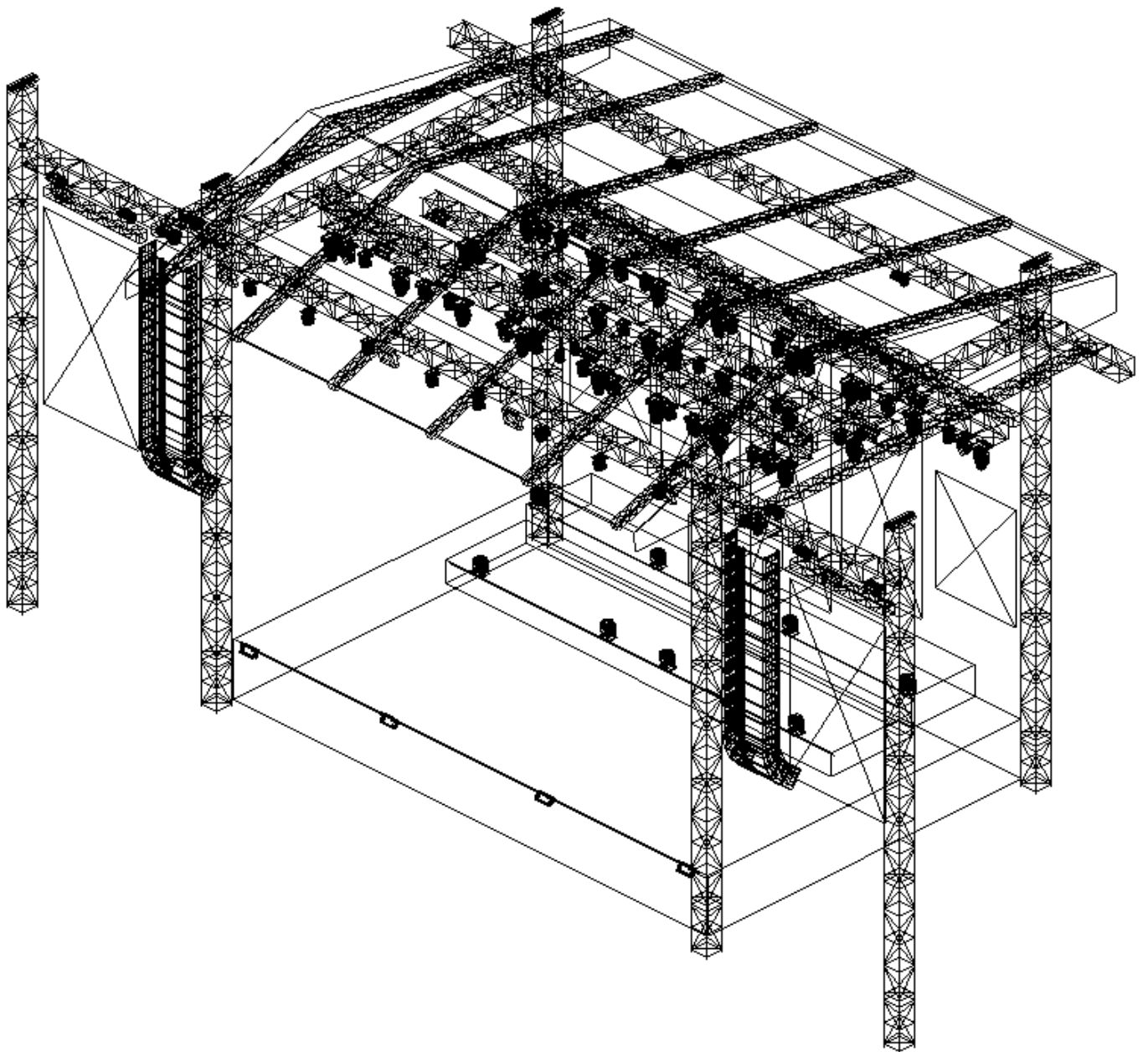
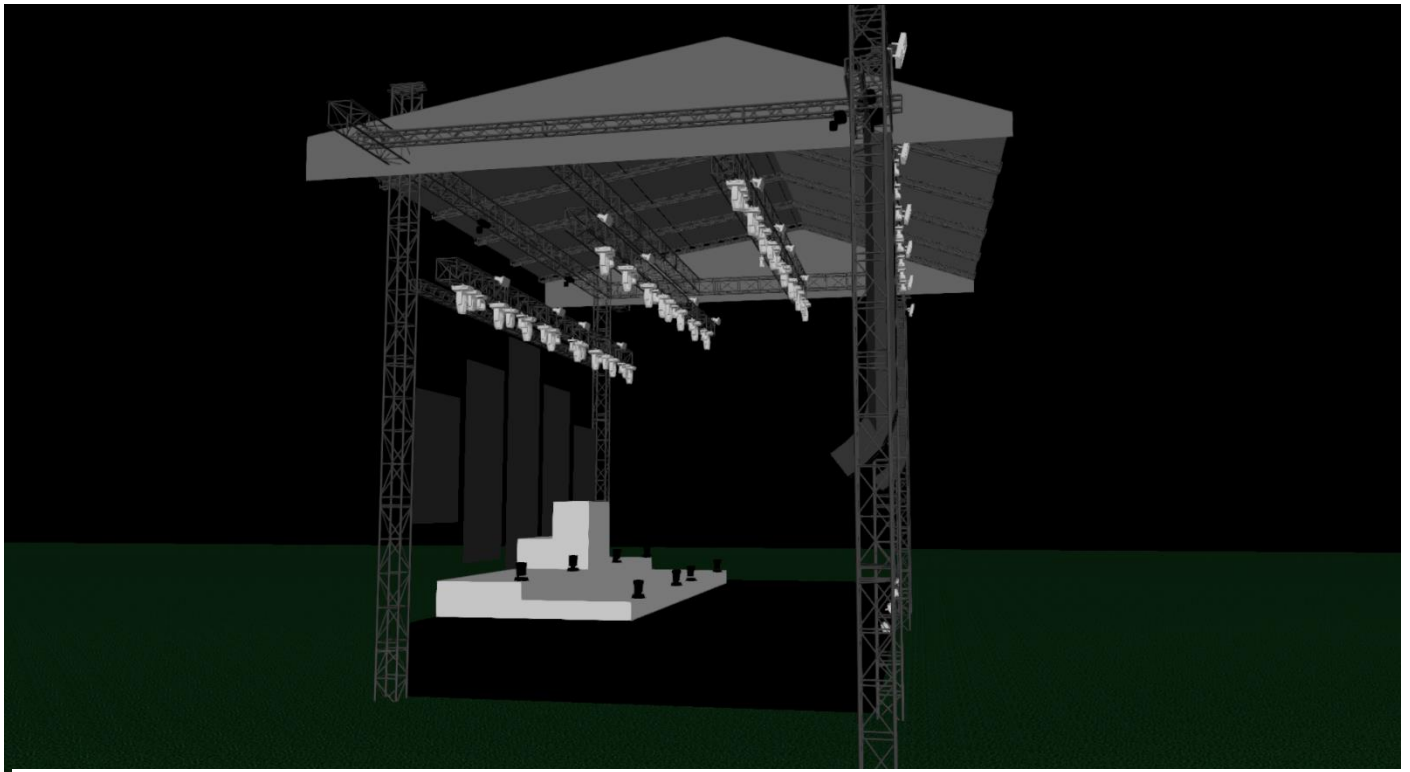
4x Unique + 4x Fan (1xUnique +1Fan Back Left and 1xUnique+1Fan Back Right)

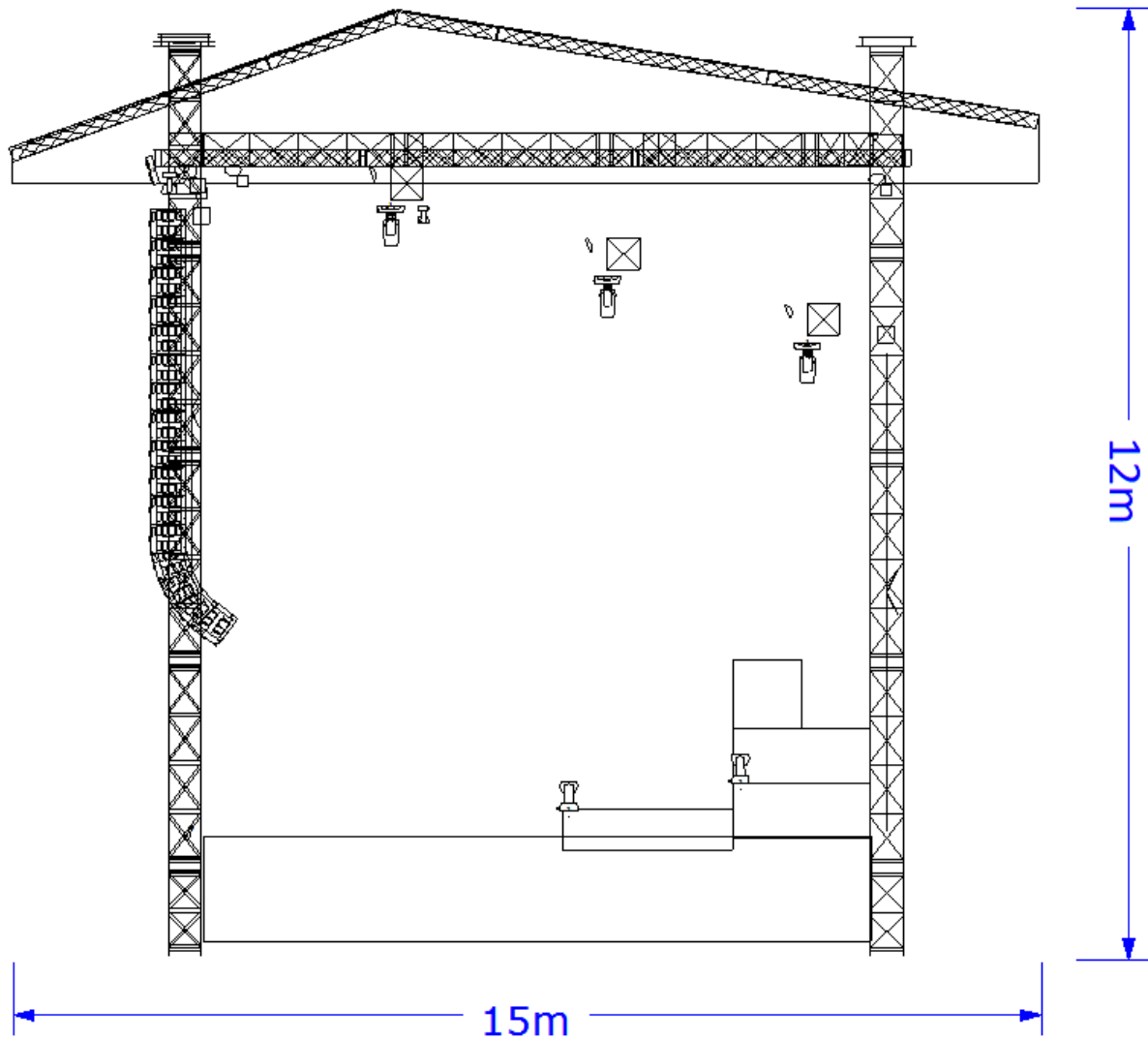
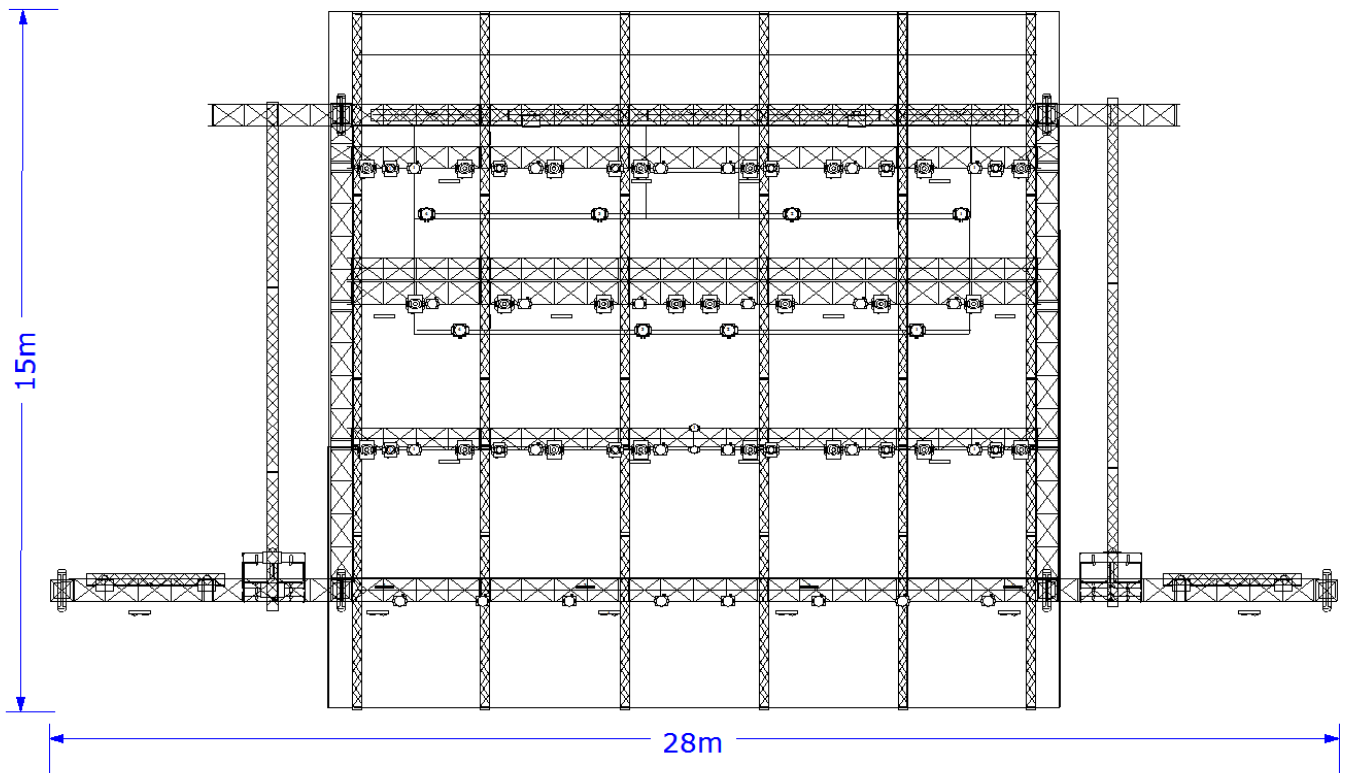
(1xUnique +1xFan Front Left and 1xUnique+1xFan Front Right)

We carry the floor set with us. For connection we require 400V 32A

Power for Lights we need 400V 125A









Preparing lighting equipment and rehearsals one evening before the show.

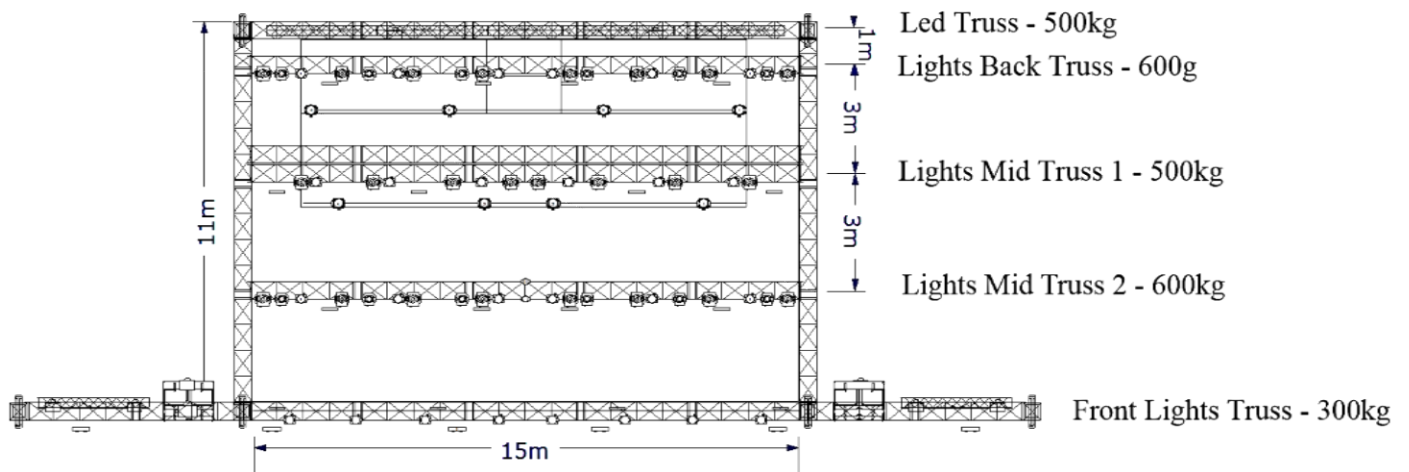
The band has its GrandMa2 light controller with a show ready and LUMINEX sACN / Art-Net converters.

Please cable Cat5 / 6e between stage and FOH.

GrandMa2 Light with Luminex DMX 8x Universe Out - We have ours



## Rigging and Weight of trusses:



- ✓ Front truss: 300kg
- ✓ Lights Mid Truss 2: 600kg
- ✓ Lights Mid Truss 1: 500kg
- ✓ Lights Back Truss : 600kg
- ✓ Led Truss : 500kg

Every Lights trusses have 15m. Minimal long is 14m.

We have all our equipment (Motors, trussy, etc...). We need from the operator a plan with load-bearing capacities, placement of suspension points or trusses at least 1 month before the event. And for rigging fence adjustment. Furthermore, the possibility of using the site crew up-riggers and crates.



# Sound

The Production company shall provide suitably qualified system engineers to rig and assist throughout the complete production.

For further information or alterations please contact the following.

## **PA system:**

### **Adamson, L-acoustic, DB Audio, Nexo**

A professional pa system suited to the venue. Please provide us asap with the basics of the venue and the system you will supply. Please supply also in-fills for first row and if needed delays, balcony fills etc. We expect on arrival a well-balanced pa system capable of providing distortion free coverage across the entire venue. Aux fed subs are welcome. The sound company shall provide suitably qualified system engineers to rig and set up the system prior to the arrival of Symphonic Dance Music crew and to remain available throughout the sound check and performance.

FOH console: Digico SD7 + Stagebox – We have ours

Monitor console: Yamaha M7CL + Signal Split – We have ours

Microphone – We have ours

Microphone stand – We have ours

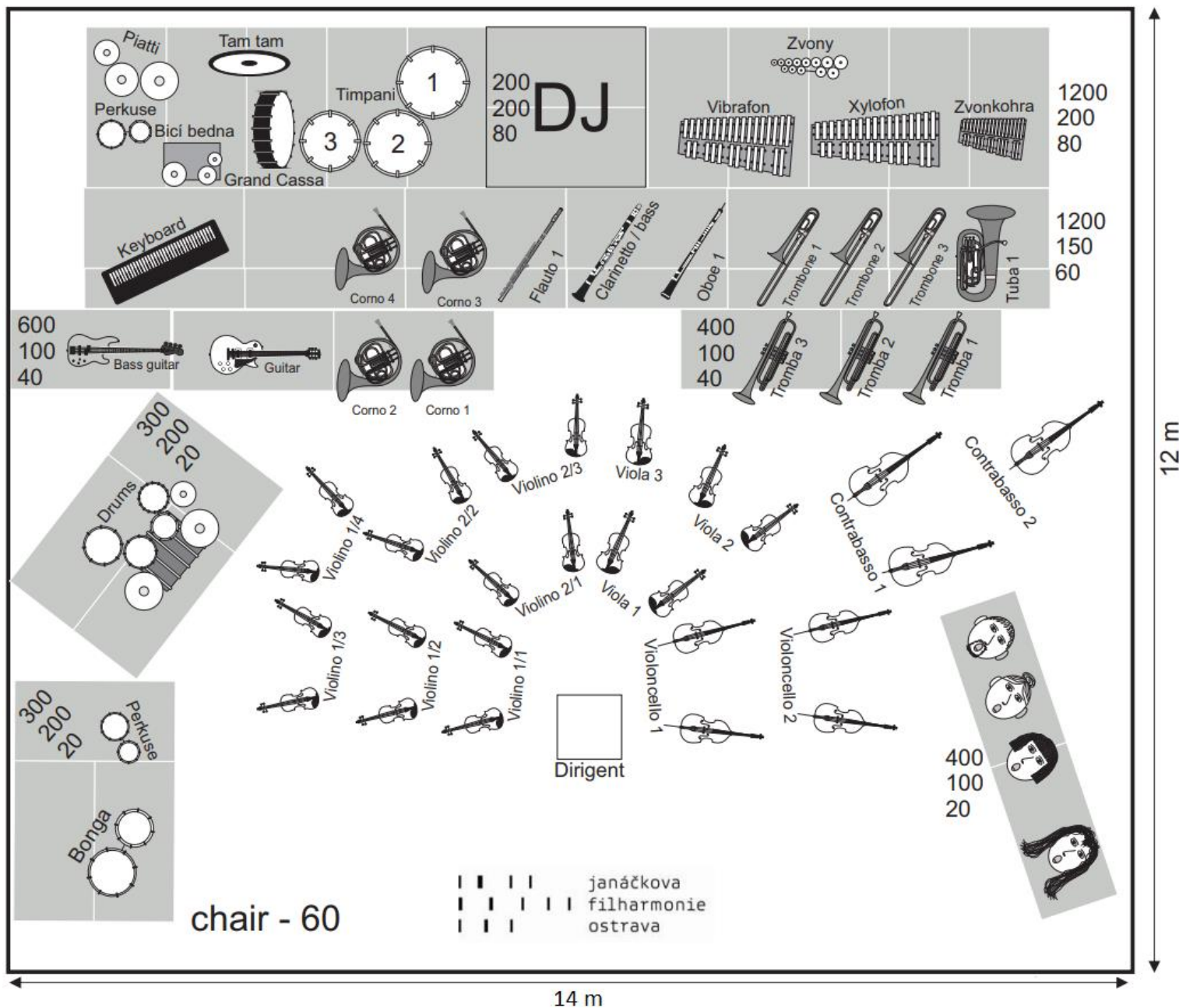
Cable XLR - We have ours

The band has its own consoles with stage boxes for monitors and FOH, including microphones, microphone tripods and cables. Please leave free space in the cable crossings where the fiber cables between FOH and STAGE (Stage Left) will be stretched.

**We Need electric Power – For Podium – 400V 32A**

**- with PA System – 400V 125A**

# Stage Plan



The band has its own consoles with stage boxes for monitors and FOH, including microphones, microphone tripods and cables. Please 2x Cat5 / 6e between the stage (Stage Left) and FOH.

**Stage** Min size of the stage is 14x10

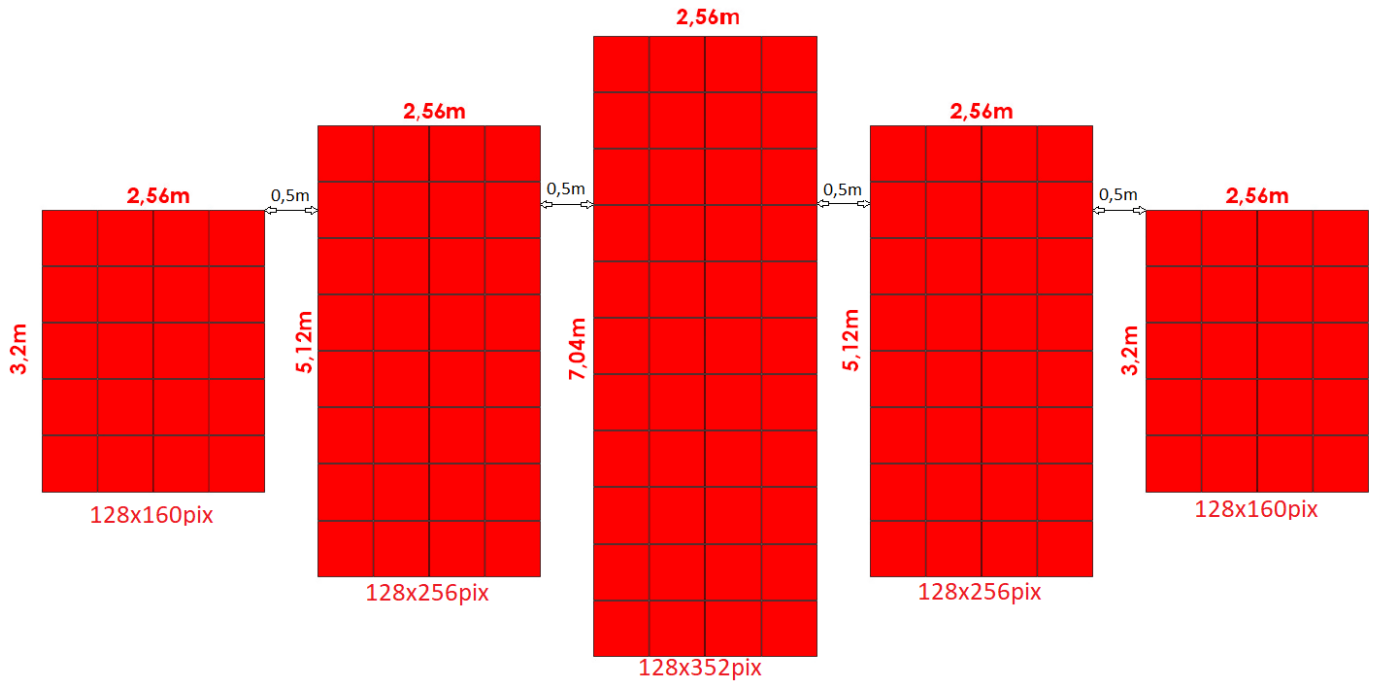
Podium certified and with a minimum load capacity of 500kg per 1m<sup>2</sup>.

Climbing from both sides of the stairs up the stairs two meters wide.

Stage and risers are provided with railing.

Necessary weathering according to manufacturer's requirements

# Video Requirements



The LED screen is 0.5m behind the last light truss.

The minimum width of the truss is 15m.

We carry the media server with us.

Video is controlled by FOH, so please connect our Media Server to your Led processor via HDMI in FOH.



# Lasers

All equipment has its band.